

MW63/MW63B



NEW

Pressure Sores Simulator

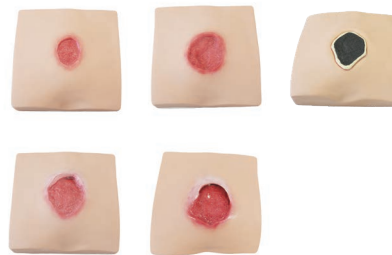
Depth, Exudate, Size, Inflammation, Granulation can be trained using a combination of different pads and simulated liquid.

Product Supervision:

MD, PhD, Professor Hiroto Terashi, Plastic and Reconstructive Surgery, Kobe University School of Medicine
Masaharu Sugimoto, Part-time Lecturer, Toyama University of Rehabilitation Medicine and Welfare Madoka Noguchi, Nursing Department, Kobe University Hospital



Debridement of necrotic tissue

**VARIATIONS**

- | Sacral pressure sore with different stages (4 types)
 - Partial-thickness loss of dermis
 - Full-thickness skin loss
 - Full-thickness skin loss with granulation
 - Full thickness tissue loss with exposed bone
- | Greater trochanter pressure sore
 - Full-thickness skin loss
- | Sciatic pressure sore
 - Full thickness tissue loss with exposed bone

FEATURES

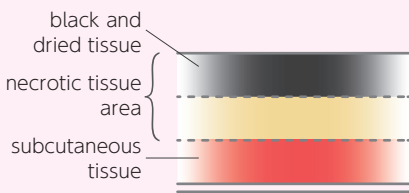
- 1 | In accordance with the DESIGN-R 2020, all seven features can be taught using a combination of different pads and simulated liquid
- 2 | Ultrasound assessment of deep tissue injury
Two types are included: normal and edema
- 3 | Cleansing, applying dressings or topical medications and procedures of Negative Pressure Wound Therapy (NPWT)
- 4 | Simulated exudate, and necrotic tissue set are included
Excellent quality in appearance and texture

SKILLS

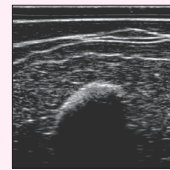
- | Pressure Sore Assessment
- | Palpation of the wound
- | Ultrasound assessment of deep tissue injury (edema in the sciatic area)
- | Wound cleansing care
- | Applying dressings
- | Applying topical medications
- | Negative Pressure Wound Therapy
- | Debridement of necrotic tissue
- | Pressure Sore Prevention

KEY FEATURES

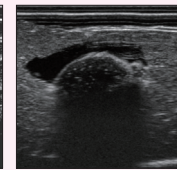
- Necrotic Tissue Removal set
"Three-layer structure"



- Sciatic pressure sore:
Ultrasound assessment of deep tissue injury
Two types are included: normal and edema



Normal



Edema

**DESCRIPTIONS****SPECIFICATIONS**

Size: W44×D40×H38 cm / W17.3×D15.7×H15 inch Weight: 3.8 kg/8.4 lbs

SET INCLUDES

1 Lower torso	1 storage case
1 Four types of sacral pressure sore pads	1 instruction manual
1 Sciatic pressure sore pad stage IV	
1 Two types of echo pads	
1 Consumables set	

SET VARIATIONS

Full set (MW63) : 11446-000
Basic set (MW63B) : 11446-100

REPLACEMENT PARTS

11446-010	1 consumables set
11446-020	1 simulated pus
11446-030	1 simulated exudate
11446-040	1 simulated blood
11446-050	1 simulated necrotic tissue

MATERIALS

Soft resin
Latex free

11446-200	1 necrotic tissue removal set
11446-220	1 base for necrotic tissue removal
11446-210	1 pad for necrotic tissue removal
11446-070	1 set of two types of echo pads