

US-20

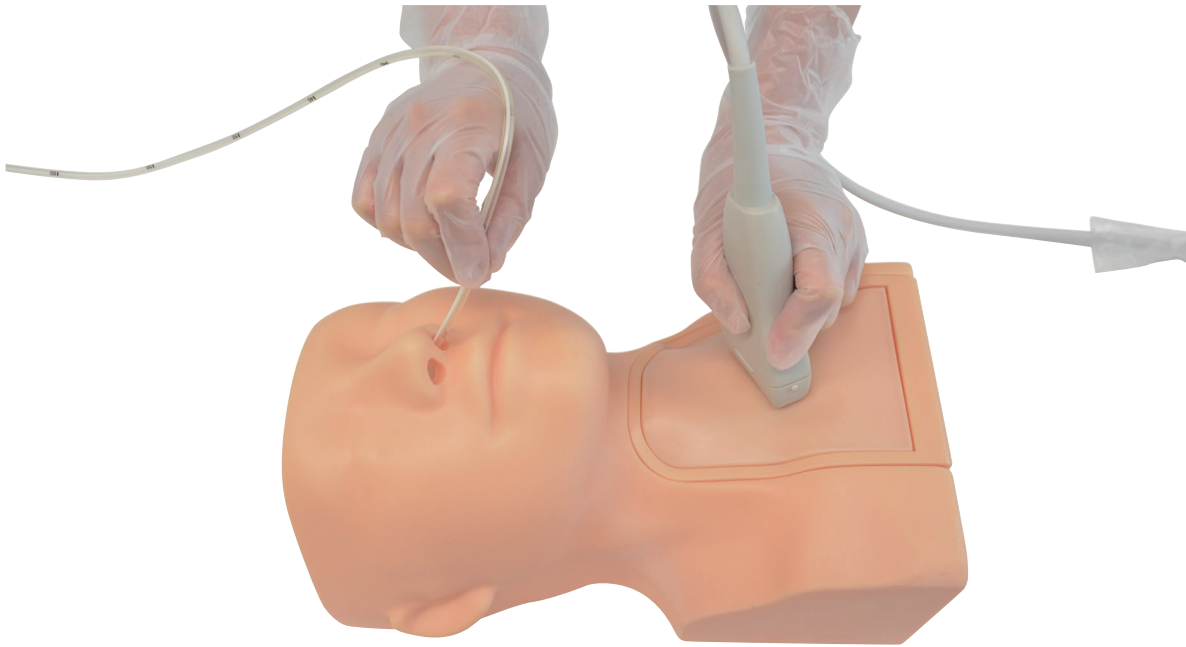
NEW

Ultrasound Guided Tube Feeding Phantom

Anatomically correct neck model for Ultrasound Guided Tube Feeding Training

Product Supervision

Hirosaki University Hospital,
General Medical Department.
Dr. Kobayashi Tadashi

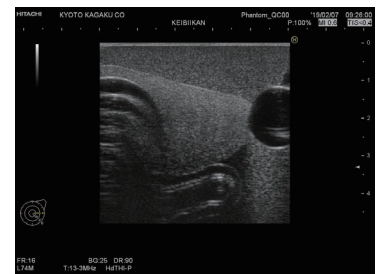


FEATURES

- Anatomically correct neck model
 - Thyroid Gland
 - Trachea
 - Esophagus
 - Sternum
 - Collarbone
 - Carotid Artery
 - Jugular Vein
- Realistic neck ultrasound images
- Usable with real ultrasound diagnostic devices
- Allows the confirmation of the proper Nasogastric Tube Placement with ultrasound
- Inner switch for tube insertion direction: trachea/esophagus for tube location image recognition tests (recognition by ultrasound of proper esophagus insertion or wrong tracheal insertion)

SKILLS

- Proper handling and manipulation of probe on neck ultrasound
- Feeding tube insertion
- Confirmation of tube placement by ultrasound
- Neck scan to evaluate the tube position.



Ultrasound image

DESCRIPTIONS

SPECIFICATIONS

Size: W29 × H17 × D18 cm Weight: 2.8kg
W11.4 × H6.7 × D7.1 inch

SET INCLUDES

- 1 main body
- 1 ultrasound neck block
- 1 nasogastric tube
- 1 syringe
- 1 talcum powder
- 1 storage case